

Integrated and Responsive Vaccines Information Management System

The Case Of VIMS In Tanzania

Harrison Mariki
inSupply Consulting Services

9th June 2017



INSUPPLY CONSULTING SERVICES

Who We Are

- A Bill & Melinda Gates Foundation funded project aimed at improving the efficiency and performance of health supply chains
- Transitioning towards a JSI-affiliated, East African regional supply chain consulting firm

Our Approach

- We develop bold, custom solutions tailored for our clients and the local context ranging from developing supply chain maturity strategies to designing and implementing data-driven, optimized supply chain systems



Our Partners



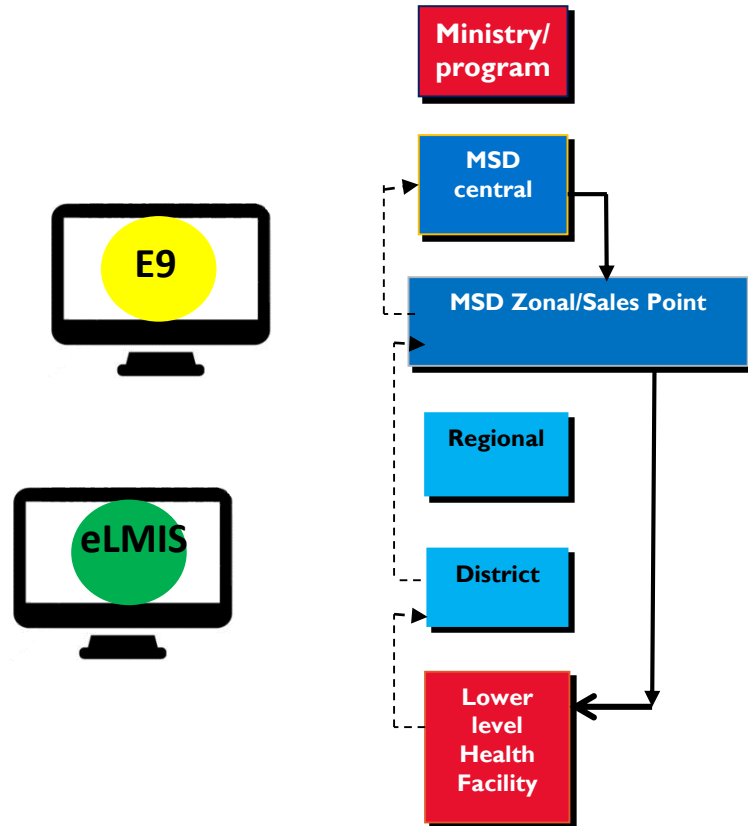
BACKGROUND

Lack of or Non-adherence to national eHealth strategies and uncoordinated efforts by development partners have often lead to innovative systems that operate in silos.

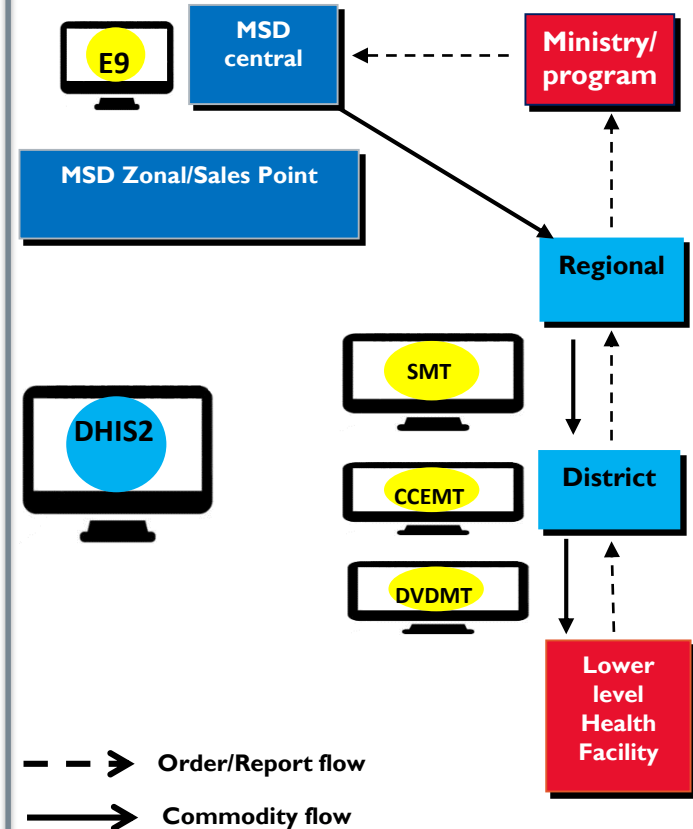
In Tanzania initiatives and technologies for managing routine immunization data, cold chain equipment, and stock management data are not integrated.

Logistics system structure

ILS, ARV, LAB, and TB&L



VACCINES



VIMS STAKEHOLDERS

Leadership



Donors

BILL & MELINDA
GATES foundation



USAID
FROM THE AMERICAN PEOPLE



Partners



VACCINES INFORMATION MANAGEMENT SYSTEM

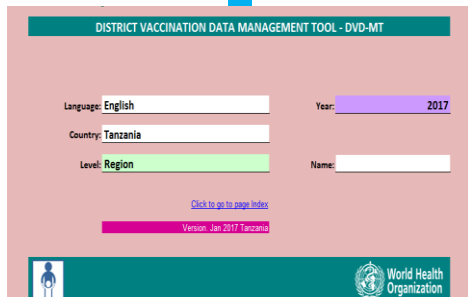
Cold Chain Inventory Management



Electronic Immunization Registry



Vaccine Stock Management



The interface shows fields for Language (English), Country (Tanzania), Level (Region), and Year (2017). It also includes a 'Name' field and a 'Click to go to page Index' link. The version is Jan 2017 Tanzania. The World Health Organization logo is visible at the bottom.

Routine immunization Data



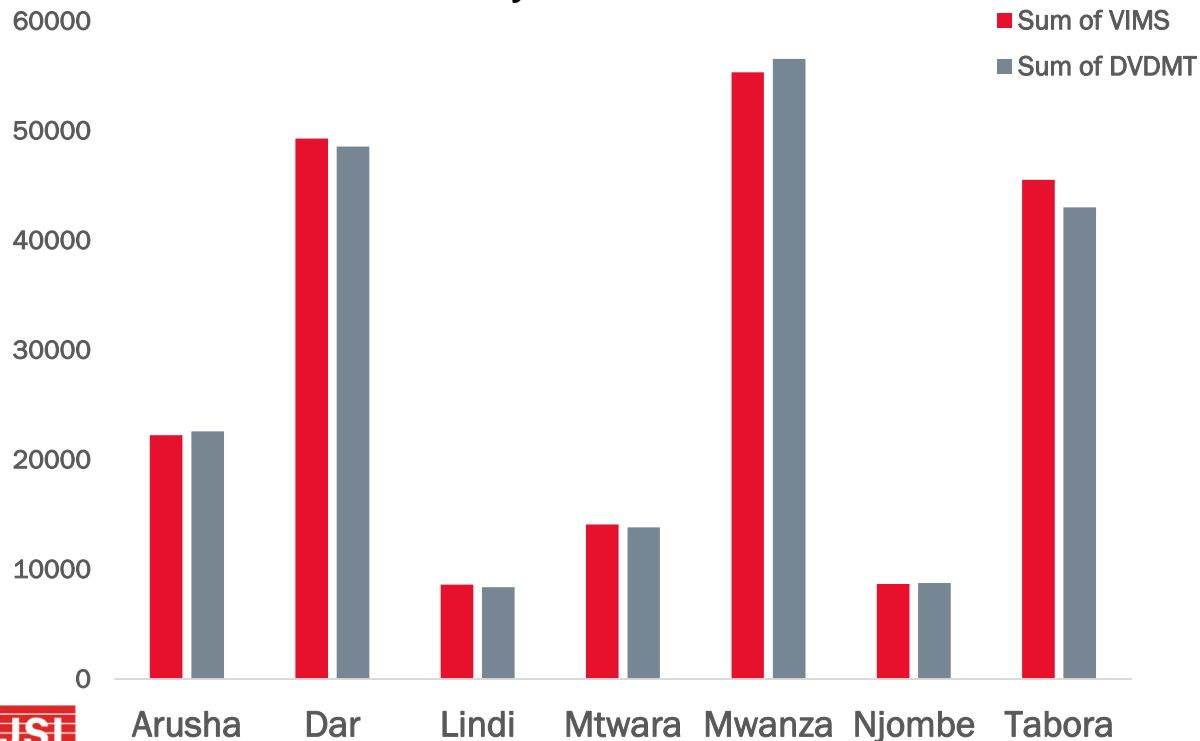
Vaccine Arrival Registry (Barcoding)

**VIMS developed
based on user
requirements
and feedback
from Pre-test
regions**



PROGRESS

Comparison of Total Children vaccinated with BCG from Jan-March 2017



	Jan-17	Feb-17	Mar-17
Reporting	99%	99%	98%
Timeliness	86%	90%	89%

Region	BCG Vaccinated (VIMS)	BCG Vaccinated (DVDMT)
Arusha	22245	22598
Dar	49305	48568
Lindi	8598	8371
Mtwara	14081	13823
Mwanza	55320	56569
Njombe	8663	8753
Tabora	45528	43024
Grand Total	203740	201706

COLD CHAIN EQUIPMENT FUNCTIONALITY AND REPAIR MANAGEMENT

- 2,228 Cold chain Equipment registered in VIMS
- With known status, location, type, energy source
- 71 Cold Chain Equipment with Non functional status due to various reasons

Repairing
Non Functional Equipments : 71

Repairing

Facility	Equipment	Date Reported	Reported By
Waiting For Spare Parts			
Arusha City DVS	TCW 3000DC	08-Jun-2016	Majid Luhida
Waiting For Repair			
Arusha RVS	TCW 1152/CF	29-Jun-2016	Vims RIVO
Igalula	Biplex Rural	13-Apr-2017	Willbard Muyumbu
Igalula	Biplex Rural	31-Mar-2017	Willbard Muyumbu
Obsolete			
Arusha RVS	TCW 3000DC	24-Oct-2016	Aziz Sheshe
Idamnole	RCW50EG	08-Oct-2016	Kulewa Mbwambo
LINDI DC DVS	RCW25	27-Feb-2017	Musa Mmanga

INCREASED STOCK VISIBILITY:

		BCG		
Store Name	Adequacy	SOH	MOS	Last Updated
Ngorongoro DVS	43 %	5,960	2.95	24-05-2017
Arusha City DVS	57 %	1,780	0.37	04-06-2017
Arusha DC DVS	57 %	700	0.19	31-05-2017
Karatu DVS	43 %	4,780	2.37	04-04-2017
Longido DVS	71 %	200	0.14	21-05-2017
Meru DVS	100 %	4,340	1.39	01-06-2017
Monduli DVS	29 %	7,380	3.97	18-05-2017

Order Now
Sufficient Stock
Order Soon
Over Stock

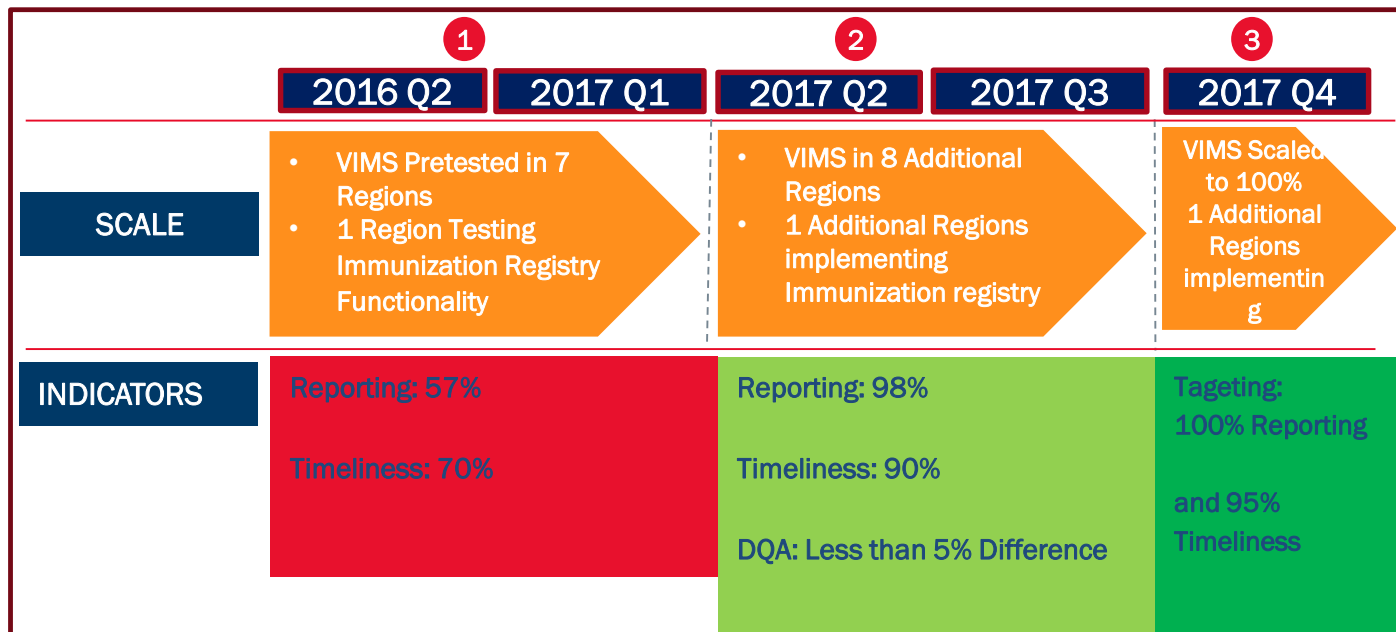
List Of Batches Nearly To Expire

Products	Batch	Stock on Hand	Expiry Date	Manufacturer
DTP-HepB-Hib	124P5044	128,900	31-Jul-2017	Serum institut of india
bOPV	M54041V	2,500,000	31-Jul-2017	Serum institut of india

Mtwara	Tandahimba DVS	28-02-2017	02-03-2017	184,740	4,000
Arusha	Meru DVS	05-11-2016	29-03-2017	8,960	3,000

Export Excel

NEXT STEPS



inSupply Consulting Services.

Innovations for Public Health Supply Chains

harrison_mariki@tz.jsi.com

Insupply.jsi.com

[@inSupplyJSI](#)