

ENHANCED SUPPLY CHAIN MANAGEMENT FOR IMPROVED HEALTH OUTCOMES AND DEPLOYMENT OF ELMIS IN NEPAL

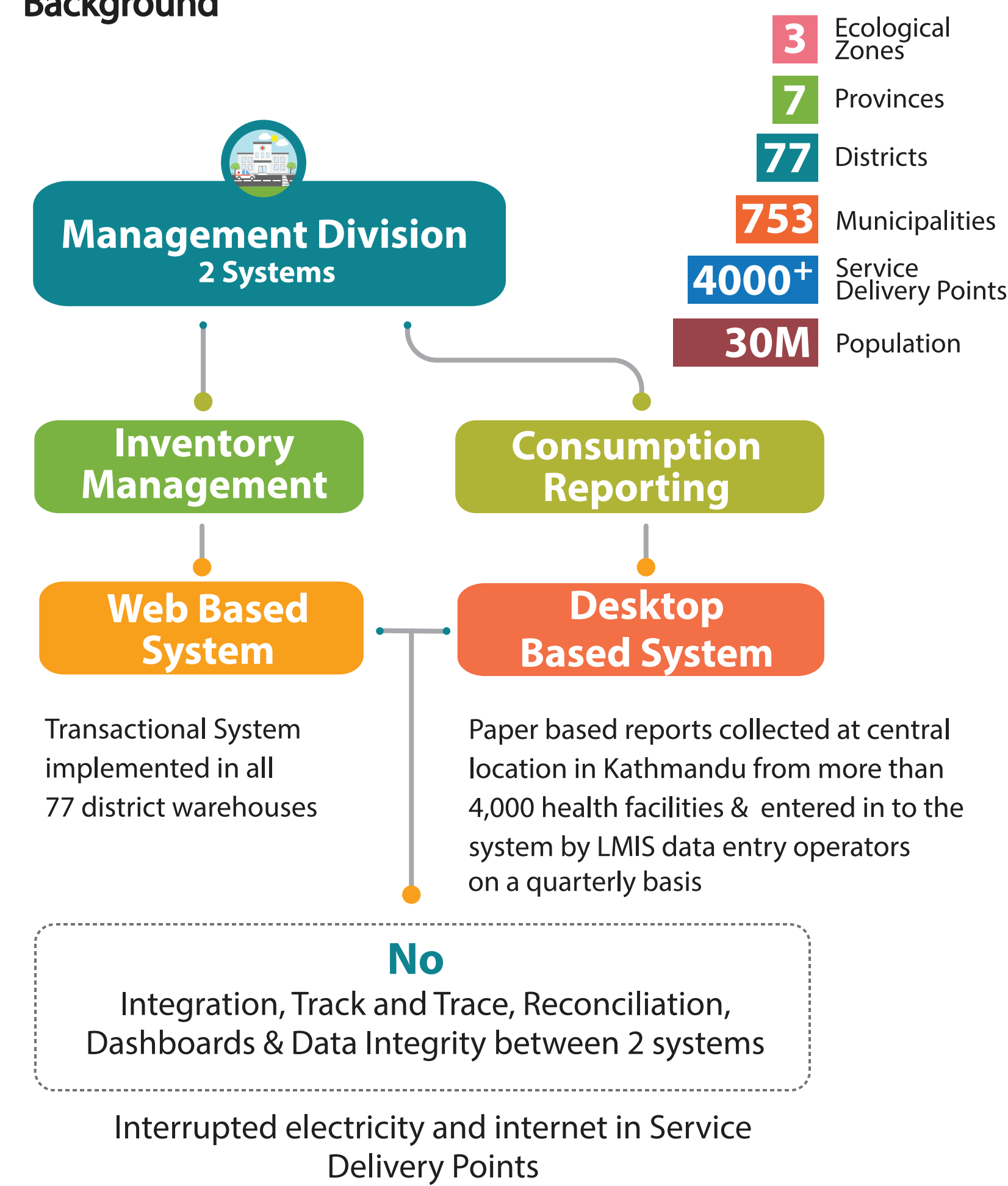


Sanji De Silva, Sanka Weerasinghe, Hemaka Wijegunasekara, Dhanushka Kavindu
Ministry of Health & Population - Nepal, USAID, GHSC-PSM & Bileeta (Pvt) Ltd

For more information, contact:
Name: Hemaka Wijegunasekara
E-mail: hemaka.anuruddha@bileeta.com

PROJECT SUMMARY

Background



Objectives

- Reduce health commodity stockouts and strengthen health systems, infrastructure, human resource management, procurement, supply chain management, and health information management.
- To strengthen logistics information systems to increase access to data.
- To improve the capacity of GON's (Government of Nepal) supply chain management professionals and local institutions.
- To optimize the supply improvements to medical stores, chain of health commodities through forecasting, quantification, distribution, procurement and other aspects of the supply chain.
- Improve data integrity and visibility of the supply chain.

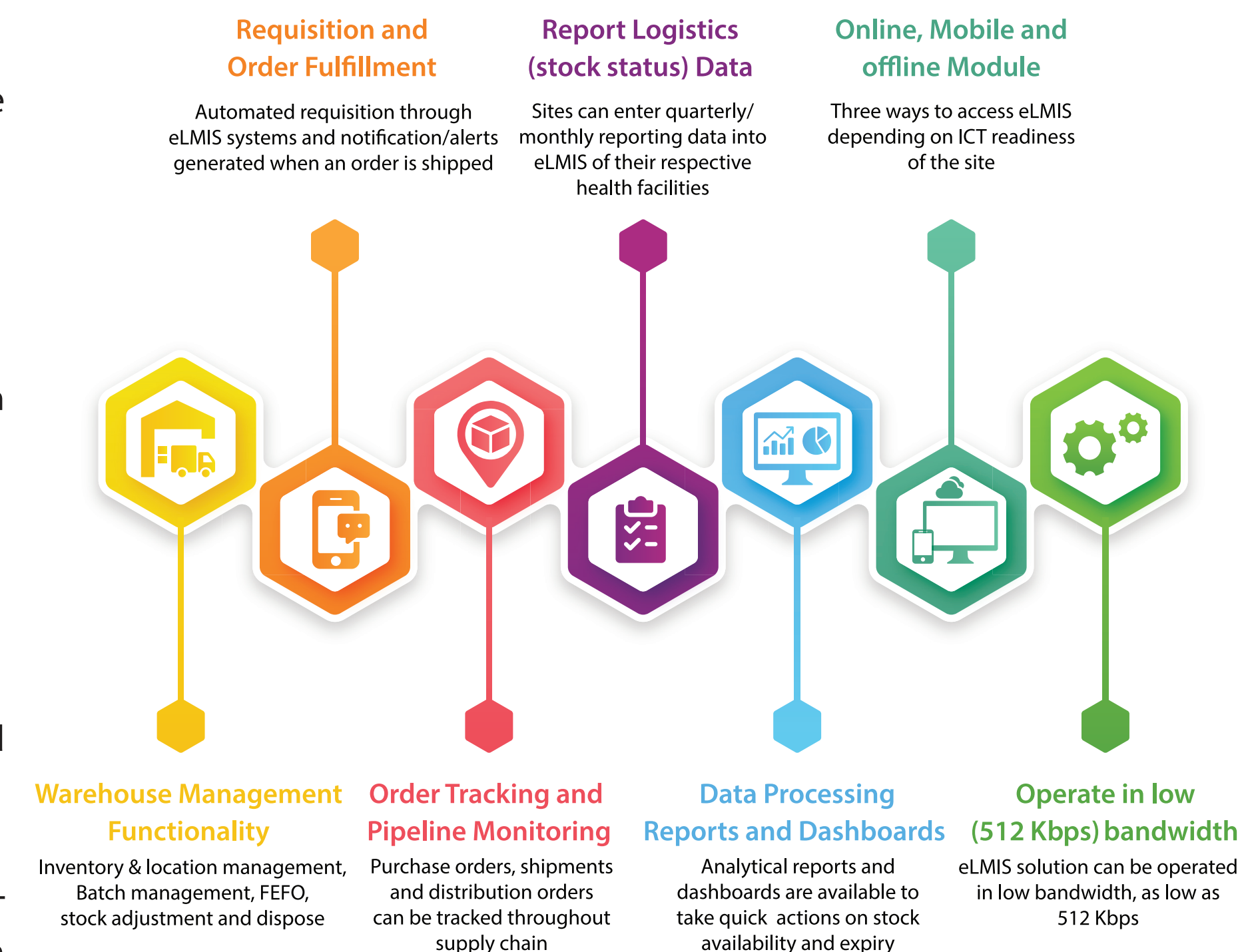
Major Activities and Findings

- The poor level of skill and knowledge of logistics and supply chain functions at the District level creates a functional break down in the overall supply chain.
- The time lag from data collection to analysis leads to increased inaccuracy in forecasts, and the inability to understand demand / stock levels in-country.
- Highly manual processes create an error prone and difficult system for the current staffing levels to maintain.

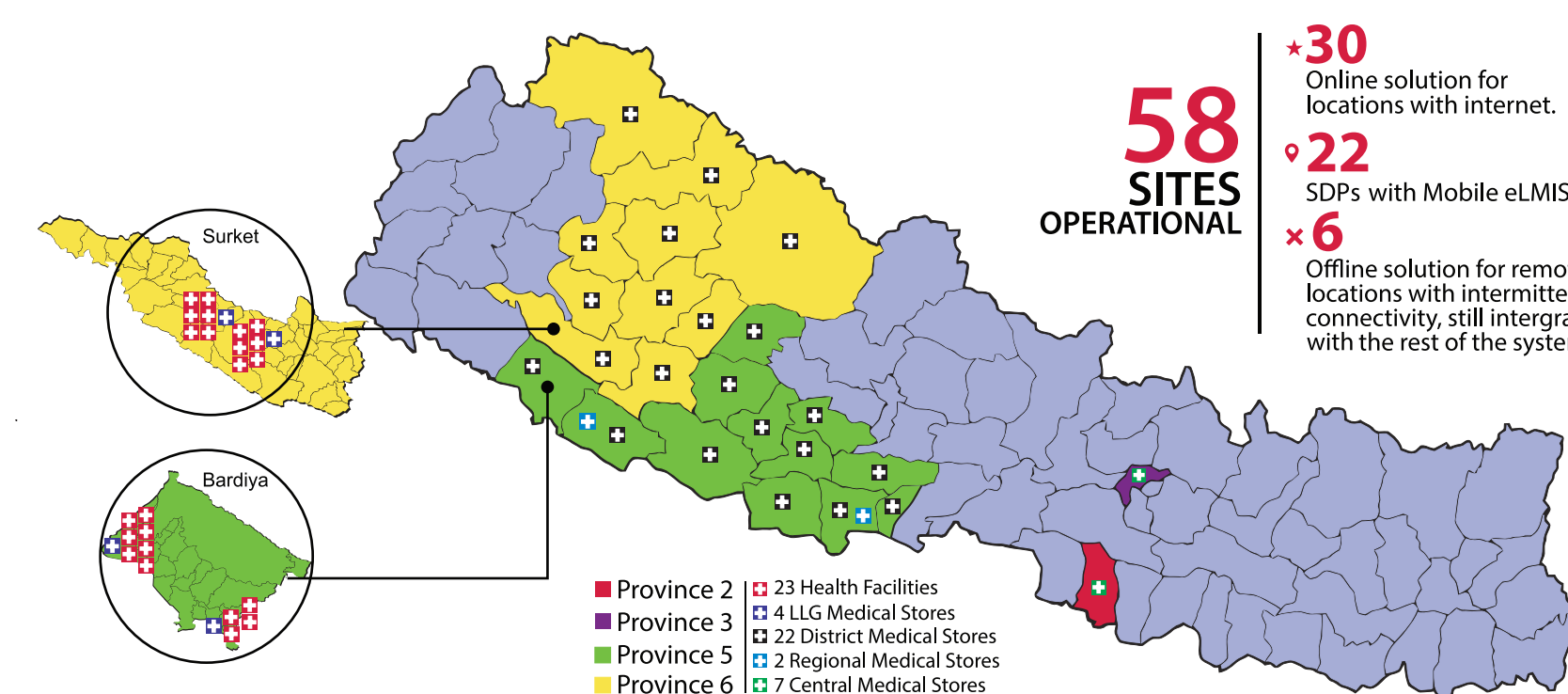
MAIN CHALLENGES AND KEY FEATURES

- Stock of Medicine at Optimum Level**
Quick indications on expiry, stock outs, low stocks and over stocks.
- Entire country's data in One System**
Covering whole country's data using Online, Offline, Mobile applications and eLMIS data entry form
- Legacy Data Migration**
Migration of legacy data from LMS system.
- Interrupted Electricity and Internet**
Deployment of Offline and Mobile Applications which can automatically synchronize data with the internet availability.
- Interoperability**
Built with secured web API layer and already integrated with 3 applications.
- Multi Language & Multi Calendar Support**
All 3 applications support English and Nepali languages and both AD and BS calendars.
- Training and Capacity Building**
Local Partnership, Training of Trainer (TOT), User manuals, TOT Manuals, Participant Guides for all 3 applications in both English & Nepali languages.

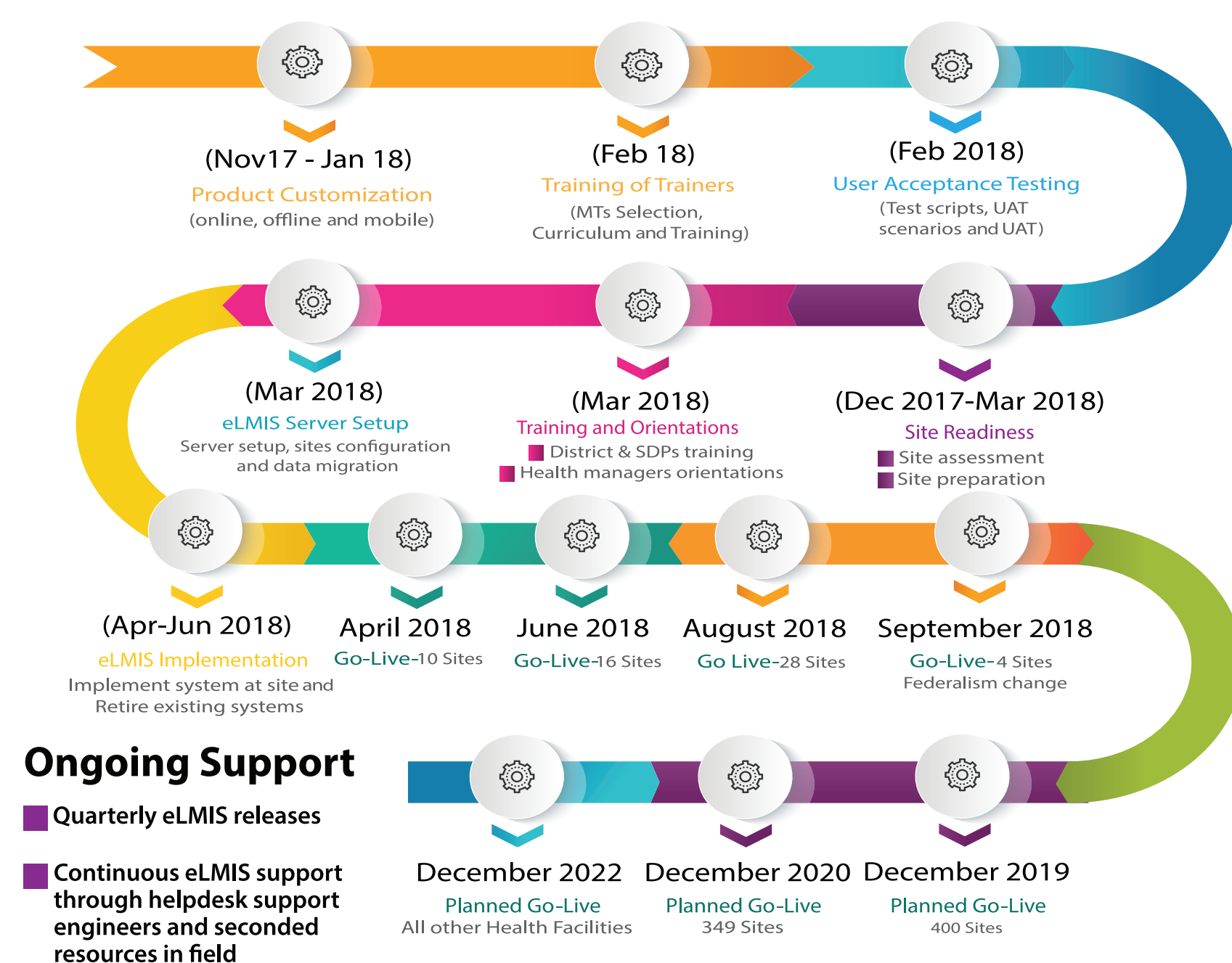
Key Features



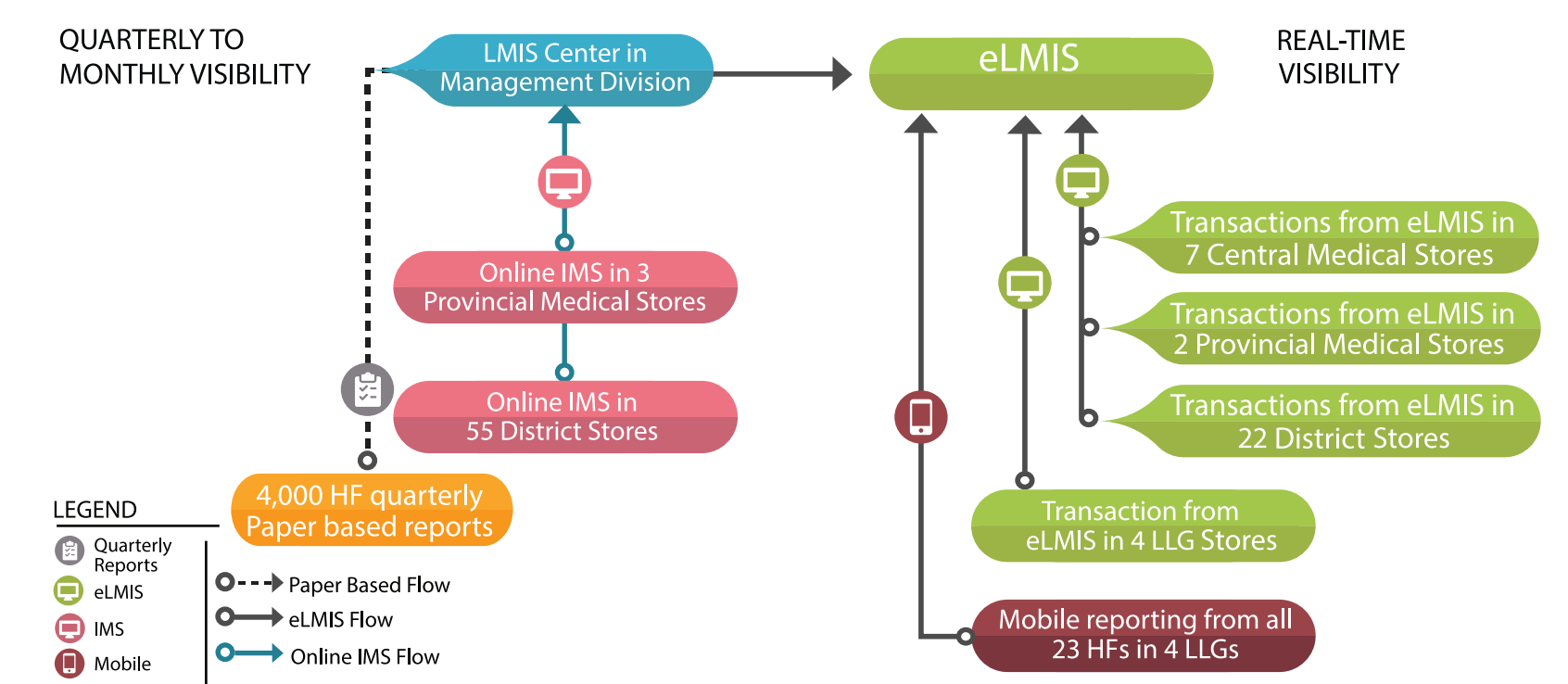
COVERAGE



ROAD MAP



DATA VISIBILITY



ADVANTAGES

- Intelligent Information:** Accurate Presentation of Decision Driven and intelligent information empowering easier and faster Decisions.
- Operational Optimization:** Optimize the flow of health commodity supply chain through forecasting, quantification, procuring and distribution.
- Greater Control:** Expiry management, Advance shipment notifications, Reorder levels, Delivery planning and Capacity management.
- Real time Information:** Support the real-time management of the Health Commodities throughout the supply chain.
- Greater Visibility on KPIs:** It enables 360 view of the inventory status in the country/organization.
- Efficient and effective:** Facilitates an efficient and effective logistics planning and management across all levels of the supply chain.
- 360 View of Inventory:** Greater Visibility of key performance indicators to empower the operations; Geographical Stock Consumption Levels, Stock Outs, Stock Availability, Forecast Accuracy, Order Accuracy, On-Time Delivery, Order Fulfillment Cycle Time, Order Fill Rate, Inventory Turnover and Remaining Shelf Life.
- Flexibility & Adaptability:** Flexible Solution with greater adaptability to country specific supply chain and logistics requirements, which could effectively support the unique requirements of health ministries across the world.
- Seamless Integration:** Seamless Integration with other Information Systems (Enterprise Resource Planning Systems, Health Information Systems, Ordering Systems, etc.)

DASHBOARD & ANALYTICS



- Entution Vesta together with PowerBI, provides advanced Business Intelligence (BI) for real-time data analytics and greater visibility through Dashboards, GIS Maps and KPIs.
- Current eLMIS performance dashboard mainly visualizes the Stockouts, Reporting status and Main transaction trends of the overall supply chain.
- Programme wise dashboards mainly focus on the Consumption, Month of Stock on Hand (MOSOH) and Expiry of the Family Planning & Maternal Child Health.
- KPIs mainly focuses on Order Fill Rate, Wastage Rate, Lead Time, Local vs Foreign Procurement, Funding Source wise Procurement, Stock out rate, etc.

CONCLUSIONS & CONTRIBUTIONS

- It has helped in strengthening the Health Facilities of Nepal under MOH.
- Fully automated & cost-effective Logistics Management of Health Commodities across Nepal.
- Reducing the lead time of exchanging health commodity data across the warehouses.
- Quick data analytics using Reports and BI tools which enable quick decision making.
- Forecasting of required commodities based on historical data and improved stock out visibility.
- Operability of Offline & Mobile applications under interrupted internet connectivity.
- High data security over all three platforms (Online, Offline & Mobile).
- It has helped strengthening work of health care commodities and services focusing on key public health priorities especially HIV/AIDS, Malaria, Family Planning, Maternal Child Health and other basic health commodities.